

# PEOPLE ON THE MOVE

HIRINGS, PROMOTIONS, BOARD MEMBERS AND SPECIAL ANNOUNCEMENTS IN SAN DIEGO



## ARCHITECTURE

Associate Promotions



**Elaina Dente**

Elaina Dente joined Delawie in 2021 after working with a firm on the Central California Coast. With a decade of experience, Dente supports Delawie's Life Science and Technology projects. She is the Project Manager of several projects in Sorrento Valley and Torrey Pines.

She can be reached at [edente@delawie.com](mailto:edente@delawie.com) and [linkedin.com/in/elaina-dente-8302b332/](https://www.linkedin.com/in/elaina-dente-8302b332/).

## ARCHITECTURE

Associate Promotions



**Nikole Fix**

Nikole Fix has been with Delawie for six years and boasts more than a decade of experience of architectural experience that spans civic and hospitality projects. Fix served as a Project Manager for Delawie's Kona Village Resort project, spearheading the LEED Gold Asaya Spa. She is an ACE Mentor.

She can be reached at [nfix@delawie.com](mailto:nfix@delawie.com) and [linkedin.com/in/nikole-fix-797b7a28/](https://www.linkedin.com/in/nikole-fix-797b7a28/).

*Delawie values the dedication of Nikole Fix and Elaina Dente and their positive impact at Delawie for future generations.*

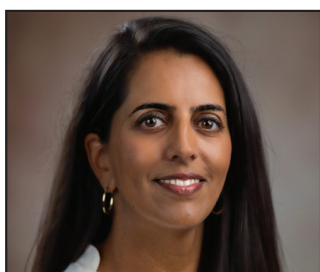
*Best of luck in your roles as Associates!*



**Jennie Brooks**



**Michele Fisher**



**Dr. Anjuli Timmer**



## HEALTHCARE/NONPROFIT

Announcement

**RADY CHILDREN'S HOSPITAL FOUNDATION IS PLEASED TO ANNOUNCE THE ADDITION OF THREE NEW MEMBERS TO ITS BOARD OF TRUSTEES: JENNIE BROOKS, MICHELE FISHER AND ANJULI TIMMER, PHD.**

As Executive Vice President at Booz Allen Hamilton, Jennie Brooks serves as the senior leader of the firm's service to Navy-Marine Corps clients. A dedicated advocate for local children, she is a longtime supporter of Rady Children's Heart Institute and its leading pediatric cardiology research—specifically the studies of Paul Grossfeld, MD, to identify prenatal interventions that could prevent Hypoplastic Left Heart Syndrome (HLHS). Jennie served as vice chair of the Rady Children's Foundation Board of Advisors and championed the Booz Allen Foundation's support of Rady Children's FACES for the Future program, a comprehensive health careers pathway program for high school students from under-resourced communities.

Michele Fisher is president of the Rady Children's Hospital Auxiliary for 2023–2025. She has held several leadership positions within the Auxiliary's Scripps Ranch Unit over the past 15 years and serves on the Auxiliary Board, currently as president and previously as vice president. Michele holds a Bachelor's in Business Management from San Diego State University and has a background in human resources management.

Dr. Anjuli Timmer is a molecular pathologist who leads development of small-molecule therapeutics at Aardvark Therapeutics as the biopharmaceutical company's chief development officer. A grateful parent of a child who received cancer care at Rady Children's, Dr. Timmer is a passionate supporter of the Peckham Center and other cancer-related organizations, including Cancer for College Advisory Board; the Leukemia & Lymphoma Society; and One Summit, a nonprofit that connects pediatric cancer patients with Navy SEALs. She earned her PhD at UC San Diego.

**"We are delighted to welcome our new trustees to help further our community leadership on behalf of children and families in San Diego, across the country and around the world," said Doug Arthur, chair of the Rady Children's Hospital Foundation Board of Trustees.**