

# PEOPLE ON THE MOVE

## HIRINGS, PROMOTIONS, BOARD MEMBERS AND SPECIAL ANNOUNCEMENTS IN SAN DIEGO



### NEW RENO, NEVADA-BASED MULTIFAMILY MANAGEMENT FIRM LAUNCHED

#### CLOUDTEN TEAM TRADES TRADITIONAL FOR INNOVATION

Headquartered in Reno, Nevada, CloudTen Residential, a new forward-thinking multifamily management firm, is now open and operating a growing portfolio in Arizona, Nevada, Oregon and Washington.

Run by a team of 130 employees, the newly launched venture specializes in the full range of property management functions, including acquisition and advisory services, maintenance, leasing and marketing – overseeing 32 properties throughout the west.

“We are very excited to deploy our passionate team of professionals to our new Nevada-based company and adapt a fresh new direction while expanding our western presence,” said Melissa Deen, president of CloudTen.

Challenging the industry’s status quo, CloudTen has been launched as a technology-centric, more nimble property management firm.

From streamlining traditional move in and out experiences to offering customized resident services to creating solutions to make maintenance issues as hassle free as possible, the operation is bolstered by proactive, digital communications.

“Keenly focused on cultivating a positive living experience in our communities, our talented and experienced team is highly specialized in this arena and believes firmly people are the core of our business,” continued Deen. “We are all committed to establish CloudTen as firm that will use trust, innovation, communication and transparency to become one of the top property management firms in the west.”

Founded by the principals of San Diego-based Sunrise Management, CloudTen Residential was formed in the wake of the COVID-19 pandemic to provide a more streamlined, customized and tech-driven approach to multifamily management.



CloudTen now oversees day-to-day management of Killian Pacific’s Ninebark, a sustainably designed community Clark County, Wash



### LEGAL

#### New Hire



Jessica Bayne

Hahn Loeser announced the addition of Jessica K. Bayne, who joined as an Of Counsel member of the firm’s Trusts and Estates Practice Area. Bayne focuses on the development of sophisticated estate planning and wealth transfer strategies, including inter-generational dynastic planning and charitable gift planning, minimizing estate, gift and generation-skipping taxes. She has extensive experience implementing tax planning strategies with various types of irrevocable trusts and wealth transfer strategies for high net worth individuals.

Bayne also has invaluable tax planning experience, previously practicing at a tax and accounting firm. She earned her J.D. from The University of Texas School of Law and a B.S. in mechanical engineering from The University of Illinois.

Jessica Bayne can be reached at [jbayne@hahnlaw.com](mailto:jbayne@hahnlaw.com).



### ARCHITECTURE

#### Announcement



Satoshi Teshima

AC Martin welcomes Satoshi Teshima, AIA, LEED AP, BD+C, as Design Principal. Satoshi brings 20 years of experience in the design of complex science, engineering, medical, and student life buildings for higher education, healthcare, civic, and community college clients. He will lead the design of the firm’s higher education projects, including science, technology, and engineering buildings, throughout California. Satoshi is currently the Design Principal of San Diego State University’s Lithium Research STEM project at the Imperial Valley campus in Brawley.



### CONSTRUCTION

#### New Hire



David Holland

Suffolk has expanded its San Diego team of construction experts with the hiring of David Holland as Vice President of Operations. Mr. Holland has over 30 years of experience in the construction industry with an emphasis on operations. In that time, he has managed and delivered more than 25 award-winning projects in Southern California, totaling more than \$3.2 billion. His portfolio spans multiple sectors including entertainment, government, hospitality, multi-family, higher-education, and more. Suffolk continues to expand its construction projects across sectors in San Diego, and the addition of Mr. Holland reflects their dedication to innovation and success in Southern California.

As the Vice President of Operations, Mr. Holland will work to expand and grow construction operations in San Diego and the surrounding region in Southern California. He manages and presides over all active and future projects and the more than 80 construction professionals in the region, including the upcoming Cedar Street 190-unit apartment project scheduled for completion in 2024.

Before coming to Suffolk, Mr. Holland worked with three large general contractors in various operations capacities, and was a consultant and owner’s representative as well. His roles have provided opportunities from preconstruction to quality control, contract negotiations to construction planning, and all sides of operations.

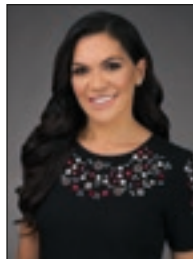
Suffolk is a national enterprise with \$5 billion in annual revenue and a strong presence on the West Coast, with offices in Los Angeles, San Francisco and San Diego. Suffolk services clients in the commercial, life sciences, healthcare, education, gaming, transportation/aviation, mission critical and government sectors.

David Holland can be reached at [DHolland@suffolk.com](mailto:DHolland@suffolk.com)



### HEALTHCARE

#### New Hire



Nancy Maldonado

Rady Children’s Hospital-San Diego recently selected Nancy Maldonado as its inaugural Chief Diversity and Inclusion Officer (CDIO). In this role, Nancy will be a key leader in providing institutional vision and setting strategic direction to advance diversity, equity and inclusion (DEI) across the health system. She will work with leaders and the DEI Council to advance equity for all members of Team Rady, patients, families, and the communities we serve.

Before joining Rady Children’s, Nancy served as President and CEO of the Chicano Federation of San Diego County. In this position, she led regional and state policy actions, and raised awareness of issues around diversity, equity and inclusion through seminars, reports and media. She pioneered multiple new programs and services while earning numerous awards including California State Assembly Nonprofit of the Year.

Nancy has a proven track record as a DEI leader with demonstrated results as a change agent, specializing in strategic planning, program management, community outreach, coalition building and partnership development. She has been recognized as one of San Diego’s Inspirational Women in San Diego Magazine, Business Woman of the Year in the San Diego Business Journal, and numerous other awards and accolades.

Please join us in welcoming Nancy to Team Rady.

# PEOPLE ON THE MOVE

HIRINGS, PROMOTIONS, BOARD MEMBERS AND SPECIAL ANNOUNCEMENTS IN SAN DIEGO



## Eight New Principals at Marsh McLennan Agency INSURANCE - PROMOTIONS



**Brad Hering**

**Brad Hering** was named a Principal at Marsh McLennan Agency. As a Client Executive in the business insurance division, Brad specializes in Executive Liability with an emphasis on Directors and Officers liability and cyber insurance. He joined the firm in 2011 as a marketing associate working with underwriters, eventually moving into a production role in 2020. Brad contributes his subject matter expertise to MMA's national XLP and Cyber practice groups. He has been an active volunteer for Miracle League and served as a Beyond School Walls mentor for Big Brothers Big Sisters.



**Laura Knipe**

**Laura Knipe** was named a Principal at Marsh McLennan Agency. As an Associate Director and Client Service Executive in the business insurance division, Laura services large accounts and mentors senior client managers into the next generation of client service leaders. She first joined the firm in 2003 in a production role with a successful sales record, but found her calling in providing exceptional service to MMA's clients after moving to the servicing side.



**Jim Laverty**

**Jim Laverty** was named a Principal at Marsh McLennan Agency. As a Client Executive in the business insurance division, Jim specializes in the construction and real estate industries. Jim joined MMA in 2008 and has since established a significant role within the real estate community, sitting on several boards of the Commercial Real Estate Development Association and serving as a guest lecturer and undergrad mentor at the USD Burnham-Moores Center for Real Estate. Jim also participates in MMA's national real estate and hospitality practice group.



**Don-nae Levya**

**Don-nae Levya** has been named a Principal at Marsh McLennan Agency. Don-nae joined MMA in 2009, managing a large book of HOA business, and has since evolved into the role of Regional Innovation Deployment Leader and Business Insurance Trainer. Over the past 13 years, Don-nae has taken on many operational duties including innovation deployment, training and development, client service trainee and insurance associate management, and more. Don-nae's expertise on all things system related makes a huge impact for the MMA team.



**Beracah Stortvedt**

**Beracah Stortvedt** has been named a Principal at Marsh McLennan Agency. Beracah started his insurance career in 2005 as a commercial underwriter and joined MMA in 2015. As a Client Executive in the business insurance division (healthcare and digital health practice group), Beracah is a leader in the space and the founder of the digital health and emerging med tech practice group at MMA. He was recently named one of San Diego Business Journal's "40 Next Top Leaders Under 40". Beracah is a Hope for San Diego volunteer, community group leader at his church, and serves as a life coach.



**Casey Tamashiro**

**Casey Tamashiro** has been named a Principal at Marsh McLennan Agency. As a Client Service Executive, Casey has taken on the role of Tech & Life Science Development leader and has been instrumental in building MMA's Tech & Life Sciences practice group, one of the firm's most successful practice groups in the nation. In addition to managing a large book of business, Casey acts as her team's development leader and mentor. Her guidance has benefited the expanding team of client service colleagues serving California's rapidly growing life science companies.



**Tiffany Dowling**

**Tiffany Dowling** has been named a Principal at Marsh McLennan Agency. As a Client Executive in the employee health and benefits division, Tiffany has grown her book of business to over \$1.4 million. Not only has she made a significant impact in new business, Tiffany serves as a mentor to her colleagues and service teams. Outside of work, she gives back to the community by being an active member of LEAD San Diego, volunteering at her daughter's school, and serving as the secretary for a non-profit for autistic children called Music Movement.



**Erin Schultze**

**Erin Schultze** has been named a Principal at Marsh McLennan Agency. As the Director of San Diego's employee health and benefits life science practice group, Erin develops best practices for programs that have been created for employers within the biotech and life science space. Since joining MMA in 2007, Erin has honed her expertise within the life science industry and supports MMA as it vets, develops and implements new programs for clients within the space. Erin holds the Certified Employee Benefits Specialist (CEBS) industry designation and gives back through Junior Achievement (JA) in San Diego.